
Shady Lane School

Owner

Shady Lane School

Architect of Record

EDGE Architecture

Details

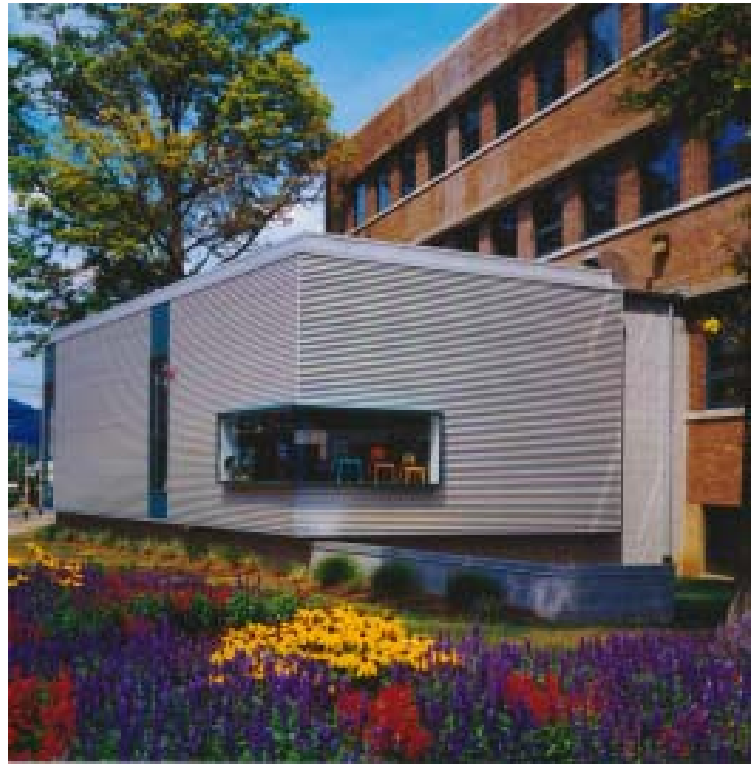
A \$647,000 addition and renovation to an occupied daycare center and school, including new offices, classrooms, kitchen modifications, and toilet rooms.

Shady Lane School's needs for this project originally exceeded its available financial resources. A. Martini & Co. worked closely with both client and architect over a 12-month period to meet the objectives while reducing initial cost estimates.

Once construction was underway, A. Martini & Co. had to proceed without disturbing the day-to-day operations. Ensuring the safety of the children, teachers, and staff was everyone's main concern. The project was completed without any disruptions or safety issues.

"It was a wonderful project and completed to perfection by A. Martini & Co. We really enjoyed working with them."

*Howard Booth, Executive Director
Shady Lane School*



A. MARTINI & CO
GENERAL CONTRACTORS